



Installing Texas Instruments TI-92 Motherboard

In this guide we will show how to access the motherboard and how to separate it from other internal components.

Need to place picture



Step 1 - Back Cover

- The first step to any repair operation is to remove the front cover.
- Grab the back of the calculator with one hand and the cover with the other.
- Pull the cover off from one of the sides for easy removal.



Step 2

- Orientate the calculator with the top facing towards you.
- Slide the locking tab, found on the top part of the calculator, to the unlock position.





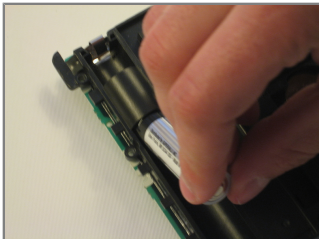
Step 3

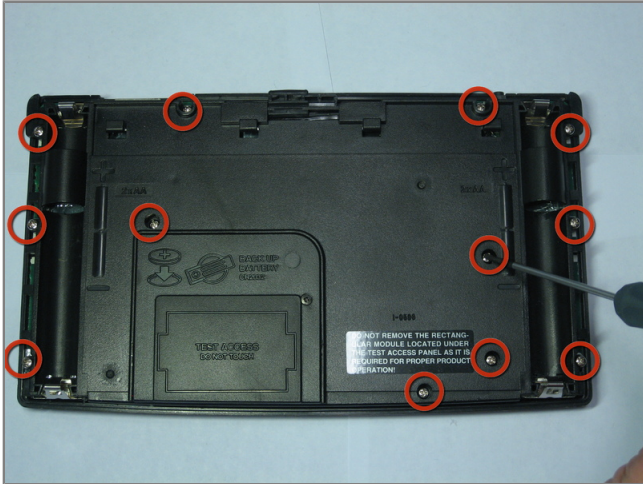
- "Locking Tab"
- To remove the back cover, slide the cover away from the locking tab towards the bottom of the calculator until the cover no longer slides.
- Then with the front of the calculator facing down, pull up on the back cover.
- The calculator should now be orientated with the front facing down, as shown in picture 2.



Step 4 - Batteries

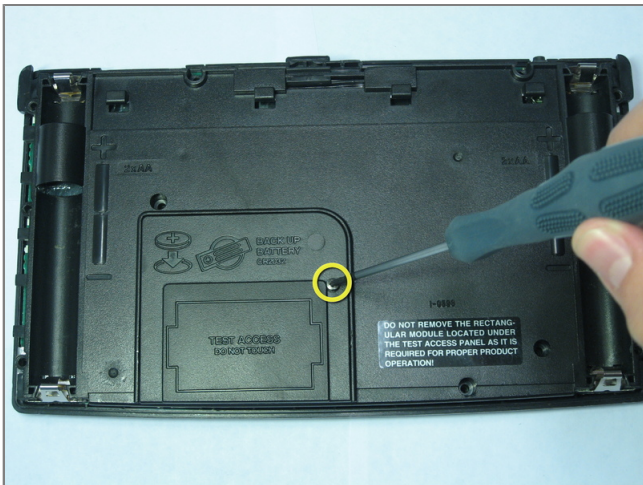
- The Batteries are now exposed and the calculator is face down with the back towards you.
- Remove the bottom batteries by pressing the battery towards you while pulling it out from the far end.
- If you can not do the previous step with your finger try using a flat ended tool such as an Ipod opening tool.
- After the bottom battery has been removed push or slide the other(*top*) battery towards you until it is fully exposed in the battery slot.
- Now simply remove the battery.





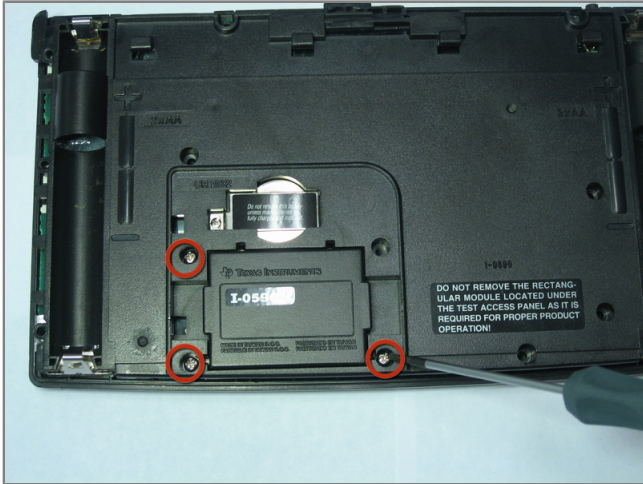
Step 5 - repair Back Case

- Using a Philips Screwdriver #00 unscrew the twelve 11.8mm screws shown in the picture and located on the back of the calculator.



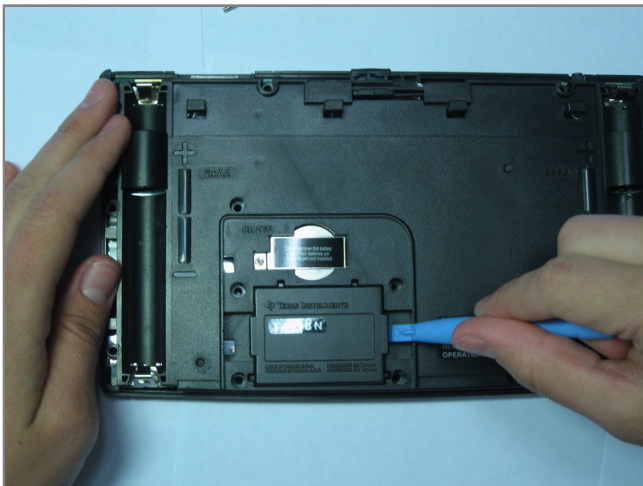
Step 6

- Unscrew the 19mm screw located near center of the back of the calculator.
- Remove the panel being held by the screw.



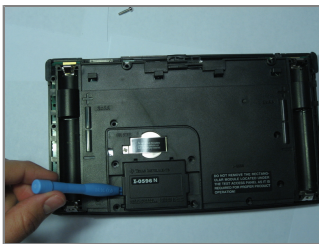
Step 7

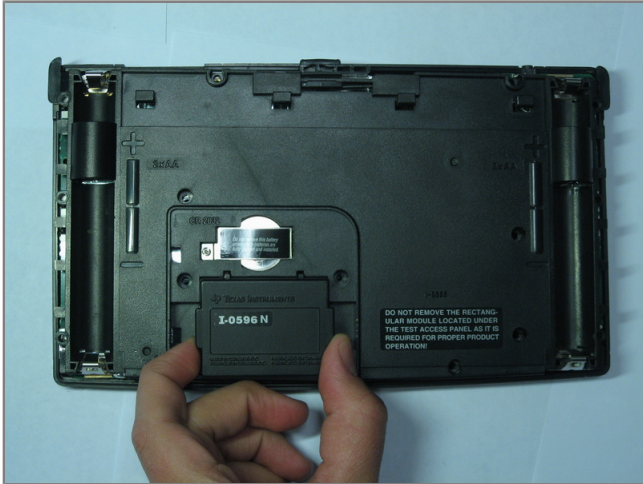
- Using the same Phillips screwdriver, unscrew the remaining three 11.8mm screws.



Step 8

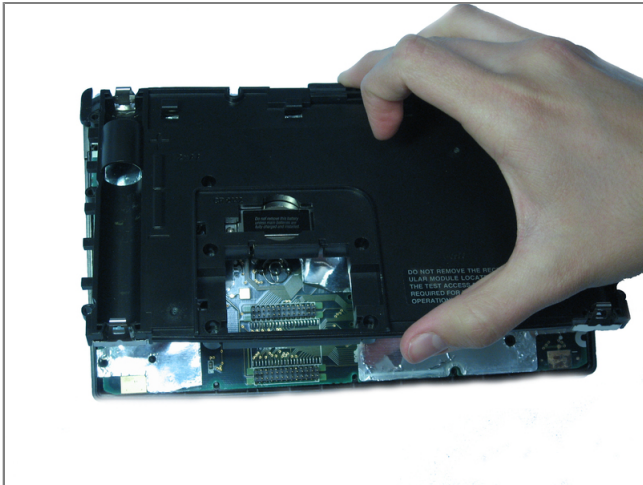
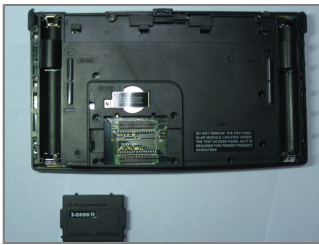
- Using the Ipod Opening Tool pull up on both sides of the rectangular module while keeping the rest of the calculator flat on a surface face down
- You may get a lot of resistance from the module. Do not use too much force as you risk damage. Use small amounts of force to work the module out.





Step 9

- Pull out the rectangular module when it is finally loose enough.



Step 10

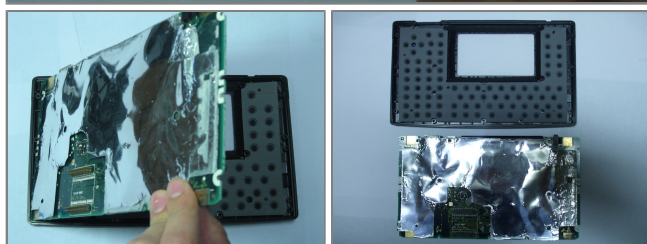
- Now pull up on the back cover of the calculator while holding the rest of it flat on a surface.
- Be careful not to tilt the front of the calculator at this point. The keyboard buttons are now unsupported and will fall out of place.





Step 11 - Motherboard

- Pull the motherboard up while holding the rest of the calculator firmly in place
- The motherboard has now separated from the rest of the calculator



To reassemble your device, follow these instructions in reverse order.

This document was last generated on Dec 14, 2010.